



35 Kemp Close

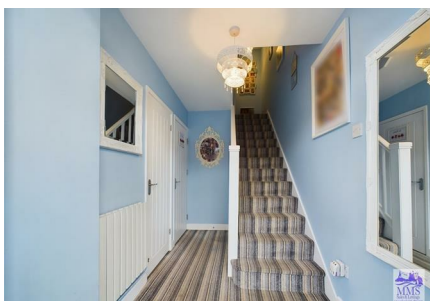
Davis Estate Chatham ME5 9SP

Asking Price £350,000

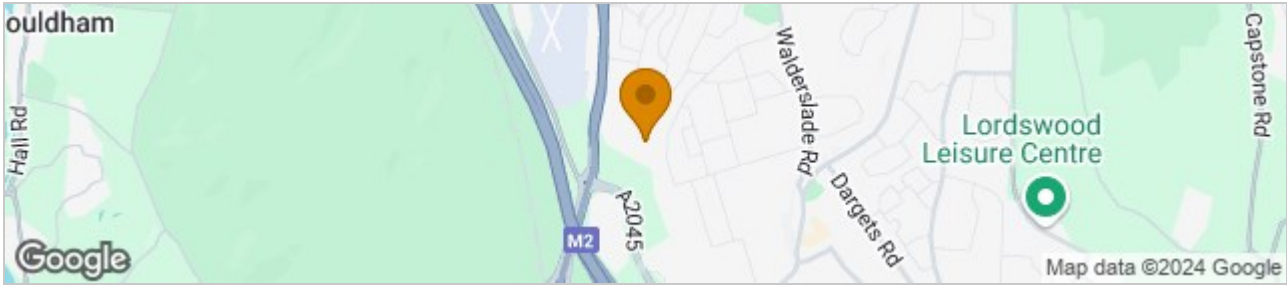


*****THREE DOUBLE BEDROOMS***IMMACULATE THROUGHOUT***DRIVEWAY THREE CARS*****

This splendid property spans 1194.79 square feet, superbly distributed across three floors for optimized room utility and living spaces. The ground floor unfolds a splendid entrance hall, garage room with a standard garage area to the front and a WC for convenience. Upon ascending to the first floor, you will encounter an open dining area seamlessly connected to a well-equipped kitchen sporting an integrated hob and double oven, alongside a spacious extended dining area well-suited for varied purposes, and a generously sized living room for family gatherings and relaxation. The second floor offers three double bedrooms and a tidy bathroom fitted with a bathtub. Throughout, this house offers a total of 3/4 bedrooms and a family bathroom, presenting a spacious and practical home design suited for a growing family or a couple planning ahead. Externally there is a large tiered rear garden and a block paved driveway. This residence intersects function, style, and comfort, exhibiting a cohesive design throughout its interiors. Council Tax B. EPC rating C.



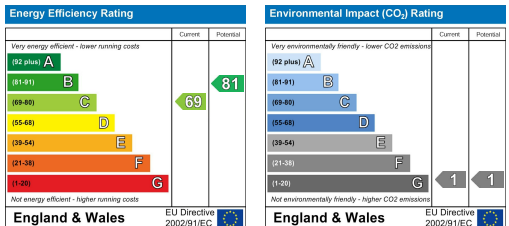
Area Map



Floor Plans

<p style="text-align: center;">Ground Floor</p>	<p style="text-align: center;">Floor 1</p>	<p style="text-align: center;">Approximate total area[®]</p> <p style="text-align: center;">1203.83 ft² 111.84 m²</p>
<p style="text-align: center;">Floor 2</p>	<p style="text-align: center;">Excluding balconies and terraces</p> <p style="text-align: center;">While every attempt has been made to ensure accuracy, all measurements are approximate, not to scale. This floor plan is for illustrative purposes only.</p> <p style="text-align: center;">GIRAFFE 360</p>	

Energy Efficiency Graph



These particulars, whilst believed to be accurate are set out as a general outline only for guidance and do not constitute any part of an offer or contract. Intending purchasers should not rely on them as statements of representation of fact, but must satisfy themselves by inspection or otherwise as to their accuracy. No person in this firm's employment has the authority to make or give any representation or warranty in respect of the property.